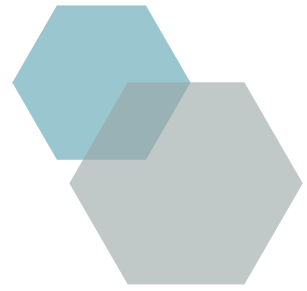




Powder Coatings
for demanding applications

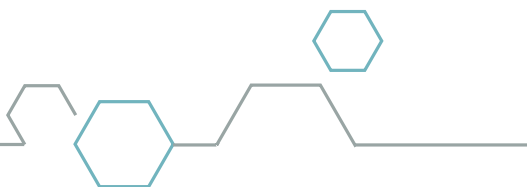
Neokem

for Architect



Aesthetics
built to last

Since 1972



How does powder coating affect aesthetics and durability?

Powder coating in architectural aluminum systems is one of the most important factors in the **aesthetics** of the architectural construction, while also determining its appearance over time.

The international trend in modern architecture is the use of **Super Durable** Powder Coatings.

Super Durable powder coatings are at least **three times more resistant** than standard powder coatings. They protect, aesthetically enhance and add value to the constructions.



Why should the architect - designer pay particular attention when selecting the powder coating?

The excessive and consistent exposure of the Powder Coatings to UV radiation can cause various signs of damages such as discoloration, fading, poor color retention and chalking. Unfortunately, these damages once they begin to occur, are **irreparable**.

Whenever the environmental conditions are harsh, (e.g. high levels of sunlight, harmful UV radiation) we can avoid or minimize premature fading and loss of gloss by specifying and using weatherable **Super Durable** Powder Coatings.





Are there technological developments and solutions in the powder coating sector?

Technological developments in the electrostatic powder coating industry add to the options currently available to architects - designers new, affordable solutions, such as the **Super Durable** Powder Coating.

With **Super durable** powder coatings, we achieve

- protection from high intensity solar radiation
- excellent resistance to mechanical properties such as scratches and abrasion which occur particularly in high-usage areas, such as schools, hotels, hospitals, offices, commercial spaces



What benefits to architects – designers can a collaboration with NEOKEM offer?

We apply our skills and experience, supporting our associates in improving their productivity, with constant communication, cooperation and information. We provide designers with color charts and color samples, which assist them in selecting their preferred shade, along with specifications and technical data sheets.

Our team continuously supports the quality of our products at a commercial and technical level. **NEOKEM**'s highly trained staff provides reliable solutions and responds with utter professionalism to your needs and provide support regarding the design, information and service of **NEOKEM** coatings. We are able to swiftly respond to our customers' preferences in the best possible way, through our extensive network of subsidiaries and sales partners, both in Greece and abroad.



Costa Navarino, 518 Sahara Haven, Prisma Collection

Why NEOKEM?

Consistent high quality

For over **35 years**, all powder coatings have been produced in our state-of-the-art manufacturing facilities, consistently guaranteeing their high quality.

We draw inspiration from the market, designing and developing powder coatings which meet high standards in quality and aesthetics, in cooperation with well-known architects and interior designers. We seek to ensure the maximum number of advantages for our partners, providing a full range of colors, as well as high-end technical and customer support.

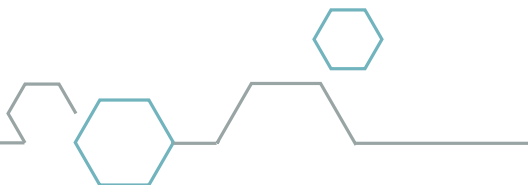
The **NEOKEM Super durable** powder coatings have been specially designed to withstand the high intensity solar radiation prevalent in Greece.

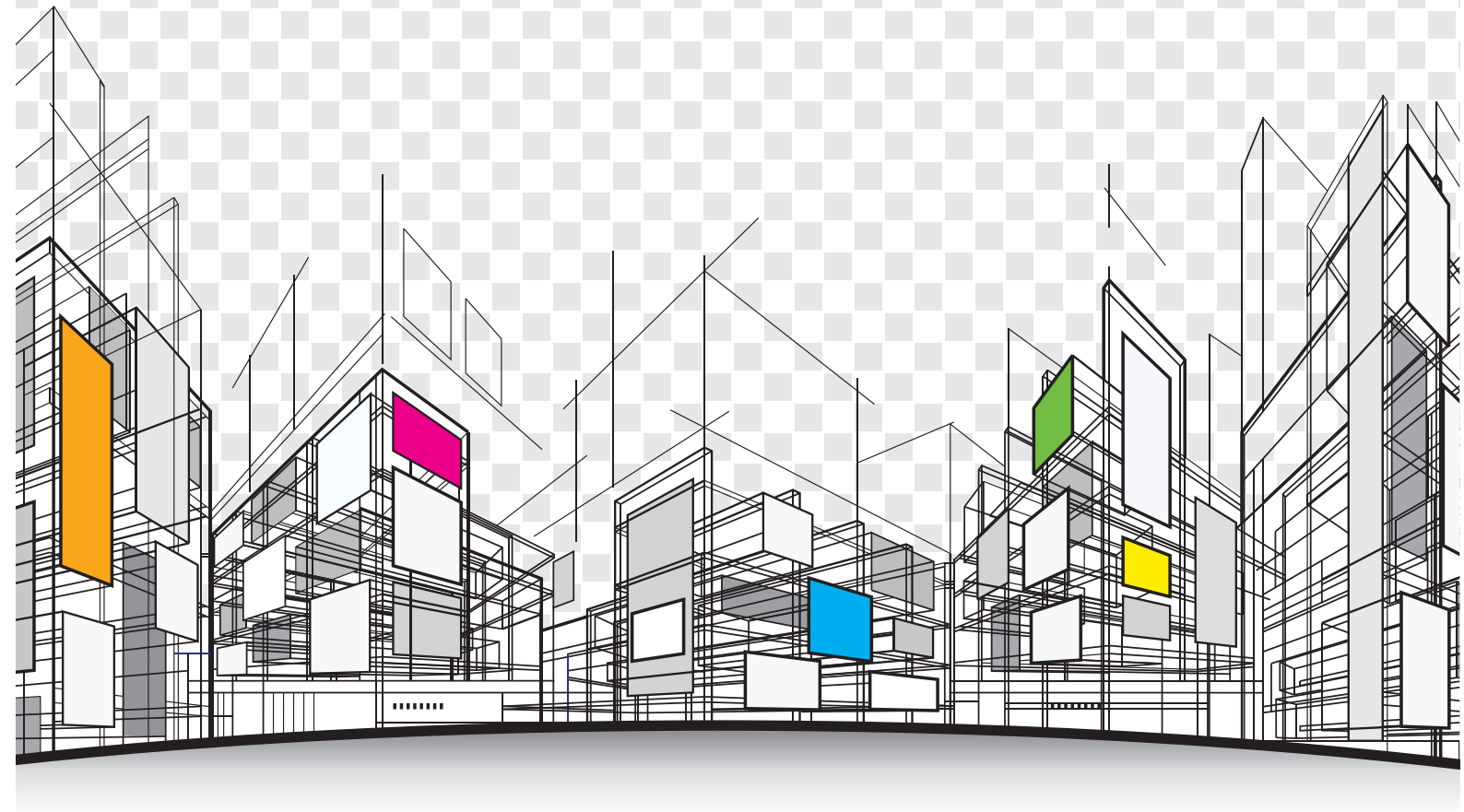
Application of NEOKEM powder coatings on modern and important buildings

Our long-term presence in the market of powder coatings and our cooperation with aluminum industries, coaters, modern architects and aluminum fabricators has resulted in the use of **NEOKEM** powder coatings to modern and important buildings, hotels, restaurants.



Look at our WORK





Which **Super Durable** powder coatings collections does NEOKEM recommend?

Prisma Collection

Sahara, Riviera & Cosmos

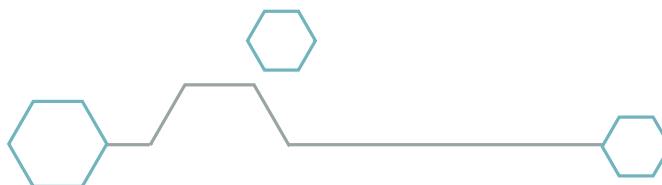
The Prisma Collection is the most reliable and innovative solution for aluminum systems in modern architectural applications. The series' colors combine aesthetics with high responsive behavior to harsh outdoor conditions and high mechanical durability to impact, scratching, and friction. All colors of the collection are certified with the international quality label **Qualicoat (Class 2)**. **Super durable** powder coatings are at least **3 times** more resistant in outdoor conditions compared to standard powder coatings.

Ammos Collection

RAL Super Durable Powder Coatings

The **RAL** super durable shades of Ammos Collection are at least three times more weather resistant than smooth colors, such as glossy and matt, class1. The color shades are approved according to **Qualicoat (Class 2)**.





HEADQUARTERS:

95, Ag. Georgiou Str.
GR 194 41 Koropi Attiki
Greece, P.O. BOX 143
Tel: +30210 6626860
Fax: +30210 6625305
e-mail: info@neokem.gr

For more info about our sales network you may visit our website



www.neokem.eu

